

# SIZE GUIDE



## Bruno

Height: 181 cm

Weight: 77 kg

Chest circumference: 96 cm

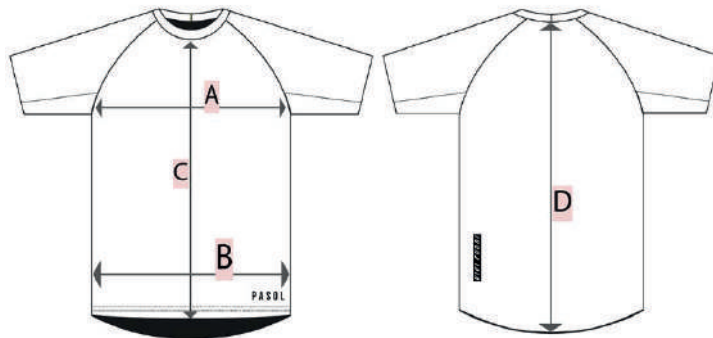
Hip circumference 90 cm

JERSEY: size M

BIB SHORT/BERMUDA: size M

UNDERWEAR: size M

Our products are measured at rest, and expressed in cm with a tolerance of +/- 1 cm. All measurements must be taken from right to left (as in the figure), and do NOT refer to the circumference of the pelvis, waist and chest.



### T-SHIRT 1107



	2XS	XS	S	M	L	XL	2XL	3XL	4XL
(A) - chest	48	50	52	54	56	58	60	62	64
(B) - hip	46	48	50	52	54	56	58	60	62
(C) - front	50	51	52	53	54	55	56	57	58
(D) - back	63	64	65	66	67	68	69	70	71

\*dimensions in cm