

SIZE GUIDE



Bruno

Height: 181 cm

Weight: 77 kg

Chest circumference: 96 cm

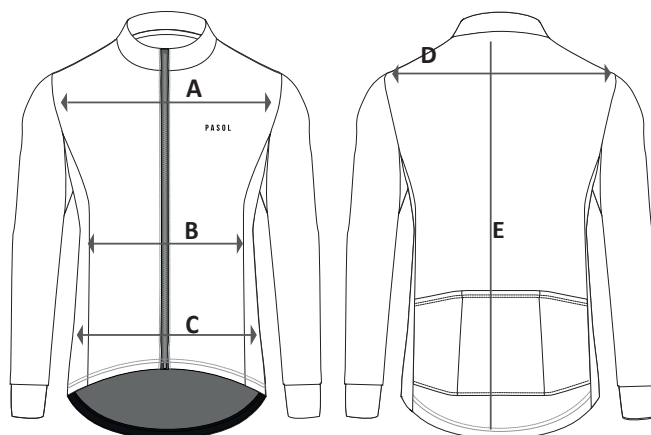
Hip circumference 90 cm

JERSEY: size M

BIB SHORT/BERMUDA: size M

UNDERWEAR: size M

Our products are measured at rest, and expressed in cm with a tolerance of +/- 1 cm. All measurements must be taken from right to left (as in the figure), and do NOT refer to the circumference of the pelvis, waist and chest.



JS FORA



	S	M	L	XL	XXL	3XL
(A) - chest	45	47	49	51	53	55
(B) - waist	43	45	47	49	51	53
(C) - hip	40	42	44	46	48	50
(D) - shoulders	33,5	35	37,5	39	40,5	42
(E) - back	65	66,5	68	69,5	71	72,5

*dimensions in cm